

49/137

DRAWING NUMBER

DRAWING NUMBER

DRAWING NUMBER

# BOCA WOODS COUNTRY CLUB PLAT 8

A PART OF BOCA WOODS COUNTRY CLUB, A P.U.D.  
SITUATE IN SECTIONS 13 AND 24, TOWNSHIP 47 SOUTH, RANGE 41 EAST,  
BEING A REPLAT OF A PORTION OF FLORIDA FRUIT LANDS COMPANY'S SUBDIVISION NO. 2  
PALM BEACH COUNTY, FLORIDA.

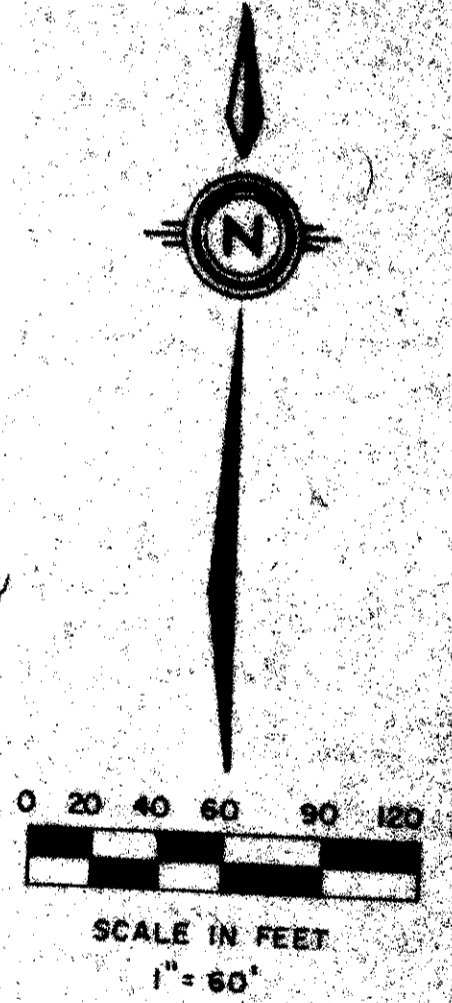
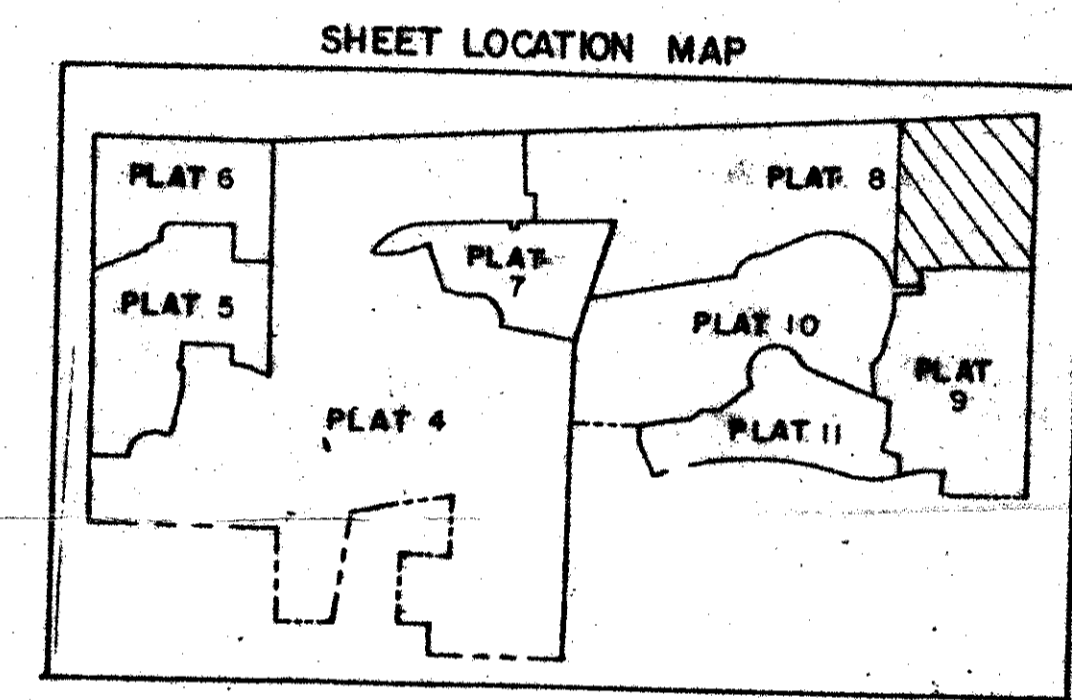
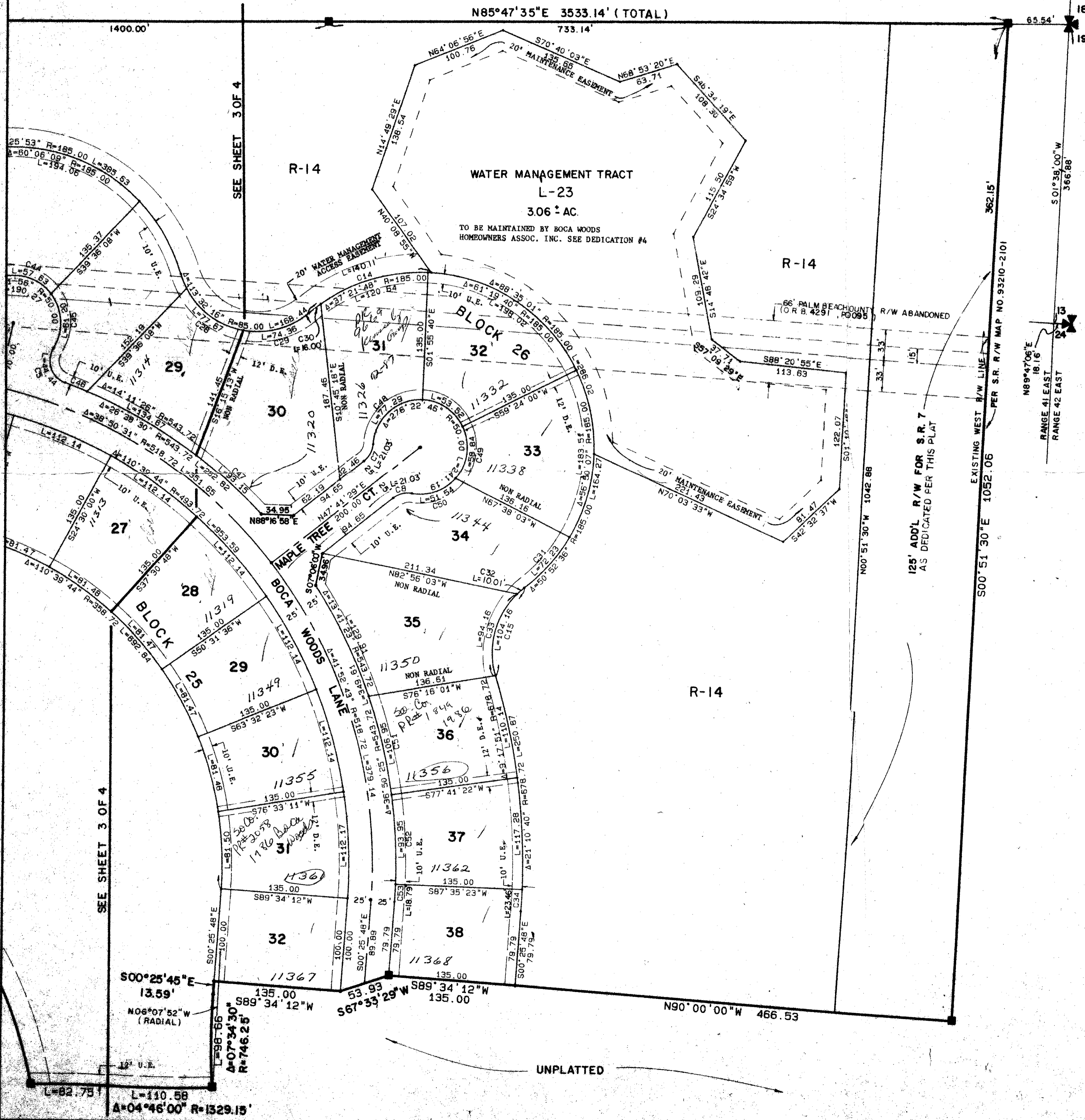
SHEET 4 OF 4

49/137

STATE OF FLORIDA  
COUNTY OF PALM BEACH  
THIS PLAT WAS FILED FOR  
RECORD AT \_\_\_\_\_  
THIS \_\_\_\_\_ DAY OF \_\_\_\_\_  
AD. 1984 AND DULY RECORDED  
IN PLAT BOOK \_\_\_\_\_ ON PAGES  
\_\_\_\_\_ AND \_\_\_\_\_  
JOHN B. DUNKLE, CLERK  
CIRCUIT COURT  
BY: \_\_\_\_\_ D.C.

FLORIDA FRUIT LANDS COMPANY'S SUBDIVISION NO. 2 P.B. 1, P.C. 102  
TRACT 56

N85°47'35"E 3533.14' (TOTAL)



NO.	DELTA	RADIUS	LENGTH
C1	103°33'52"	25.00	45.19
C2	103°33'52"	25.00	45.19
C3	2°13'14"	1059.24	41.05
C4	101°51'14"	25.00	44.44
C5	101°51'14"	25.00	44.44
C6	88°44'26"	25.00	38.72
C7	48°11'23"	25.00	21.03
C8	48°11'23"	25.00	21.03
C9	88°44'26"	25.00	38.72
C10	44°49'06"	85.00	66.49
C11	50°42'26"	85.00	75.23
C12	12°16'12"	678.72	145.74
C13	41°21'10"	85.00	61.35
C14	43°23'33"	185.00	140.11
C15	70°12'47"	85.00	104.16
C16	2°55'52"	461.85	23.63
C17	2°38'03"	1194.24	55.25
C18	3°19'16"	1194.24	69.22
C19	28°55'56"	85.00	42.92
C20	15°53'09"	85.00	23.57
C21	8°13'32"	185.00	26.56
C22	16°54'47"	85.00	25.09
C23	33°47'39"	85.00	50.13
C24	3°25'41"	678.72	40.81
C25	31°13'43"	85.00	46.33
C26	10°07'27"	85.00	15.02
C27	31°49'55"	185.00	102.78
C28	52°21'29"	85.00	77.67
C29	50°07'15"	85.00	74.36
C30	4°57'25"	185.00	15.00
C31	22°22'12"	185.00	72.23
C32	6°44'40"	85.00	10.01
C33	63°28'07"	85.00	94.16
C34	1°58'49"	678.72	23.46
C35	3°58'52"	536.85	30.53
C36	2°39'03"	1059.24	49.00
C37	4°11'02"	1059.24	77.35
C38	60°49'59"	50.00	53.09
C39	92°56'20"	50.00	81.10
C40	2°13'14"	1059.24	41.05
C41	3°33'24"	1548.32	96.11
C42	10°20'27"	543.72	98.13
C43	81°51'25"	50.00	71.43
C44	66°02'31"	50.00	57.63
C45	70°07'58"	50.00	64.20
C46	2°38'05"	543.72	25.00

NO.	DELTA	RADIUS	LENGTH
C47	9°48'59"	543.72	93.15
C48	88°34'14"	50.00	77.29
C49	67°25'30"	50.00	58.84
C50	59°03'22"	50.00	51.54
C51	11°16'13"	543.72	93.15
C52	9°54'01"	543.72	106.95
C53	1°58'49"	543.72	93.15
C54	5°29'38"	646.85	62.02
C55	0°44'43"	646.85	8.41
C56	4°16'50"	1009.24	75.40
C57	3°46'23"	1009.24	66.46
C58	1°18'32"	1598.32	36.52
C59	1°57'18"	1598.32	54.54
C60	6°33'08"	493.72	56.46
C61	5°29'38"	781.85	74.97
C62	0°44'43"	781.85	10.17
C63	4°16'50"	874.24	65.31
C64	3°46'23"	874.24	57.57
C65	1°18'32"	1733.32	39.60
C66	6°33'08"	358.72	41.02
C67	51°46'57"	25.00	22.99
C68	27°29'49"	185.00	88.78
C69	11°03'32"	85.00	16.41
C70	1°57'18"	1733.32	59.15

SUBDIVISION Boca Woods C.C. #8  
BOOK 49 PAGE 13C  
FLOOD ZONE 13 FLOOR MAP #1000  
QUAD # C8 ZONING RE  
BE PUD IMP CODE 33.433  
PUD NAME Boca Woods C.C.

49/137 0215-302

Meridian Surveying and mapping Inc. WEST PALM BEACH, FLORIDA

DRAWN	DATE	JAN 1984
CHECKED	SCALE	1" = 60'

BOCA WOODS COUNTRY CLUB PLAT 8